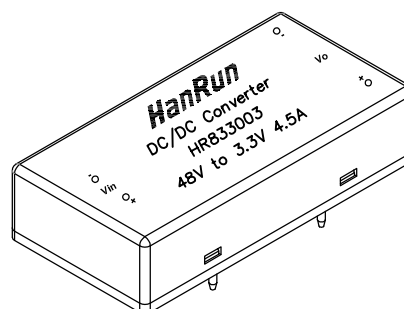


15W DC - DC Regulated
Single Output Converter

HR833003

Features :

50.8x25.4mm compact size
High efficiency up to 81%
1500VDC I/O isolation
Cooling by free air convection
Six-sided shield metal case
100% burn-in test
Low cost / High reliability
Protections: Short circuit / Over Current
Industry Standard Pinout
RoHS Compliant (Pb Free)



Electrical Specification @25°C

| | | |
|------------------------|--------------------------|--|
| Output | DC Volatage | 3.3V |
| | Current Range | 450 ~ 4500mA |
| | Rated Power | 15W |
| | Ripple & Noise (note 2) | 150mVp-p Max. @ BW=DC to 20MHz |
| | Line Regulation (note 3) | ±1% |
| | Load Regulation (note 4) | ±1% |
| | Voltage Accuracy | ±2% |
| | Switching Frequcy | 370KHz Typ. |
| Input | Voltage Range | 36 ~ 72VDC |
| | Efficiency (Typ.) | 81% |
| | DC Current (Typ.) | 10mA @ No Load / 550mA @ Full Load |
| | Filter | Capacitors |
| | Protection | External Fuse recommended |
| | | |
| Protection (note 5) | Over Current | 110% ~ 180% Rated output current |
| | Short Circuit | All output equipped with short circuit . Protection type:Hiccup mode,recovers automatically after fault condition is removed |
| | | |
| Environment | Working Temprature | -40 ~ +85°C |
| | Working Humidity | 0% ~ 90% RH non-condensing |
| | Storage Temp., Humidity | -40 ~ +85°C, 10 ~ 95% RH |
| | | |
| Safety | Withstand Voltage | Input to output :1500VDC Min. , 5mA Max. , 60 senonds |
| | Isolation Resistance | Input to output :1000M Ohms @ 500VDC 25°C 70% RH |
| | | |
| Others | Dimension | 50.8*25.4*11.8 mm (L*W*H) |
| | Weight | about 30g |
| | | |

15W DC - DC Regulated Single Output Converter

HR833003

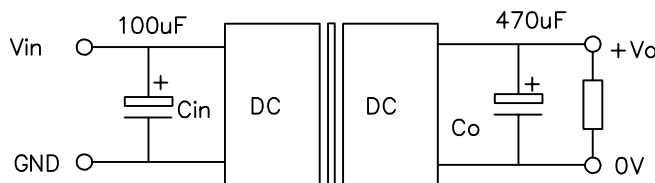
Note :

- 1.All parameters are specified at normal input, rated load, 25°C ambient.
- 2.Ripple & noise are measured by using a probe terminated with a 0.1uf & 47uf capacitor
- 3.Line regulation is measured from low line to high line at rated load.
- 4.Load regulation is measured from 10% to 100% rated load.
- 5.Please prevent the converter from operating in overload or short circuit condition for more than 30 seconds.
- 6.This part is not designed for parallel operation.

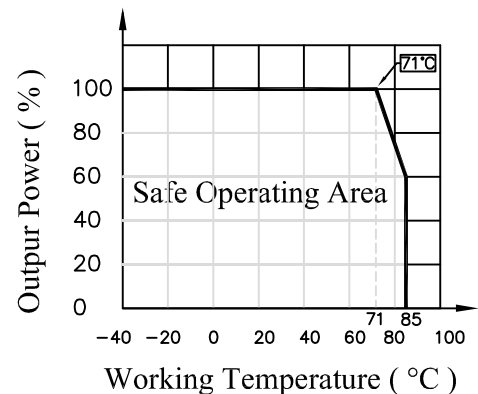
Pin Assignment

| Pin | 1 | 2 | 3 | 4 | 5 | 6 |
|--------|------|------|-------|----|-------|----|
| single | +Vin | -Vin | -Vout | NC | +Vout | NC |

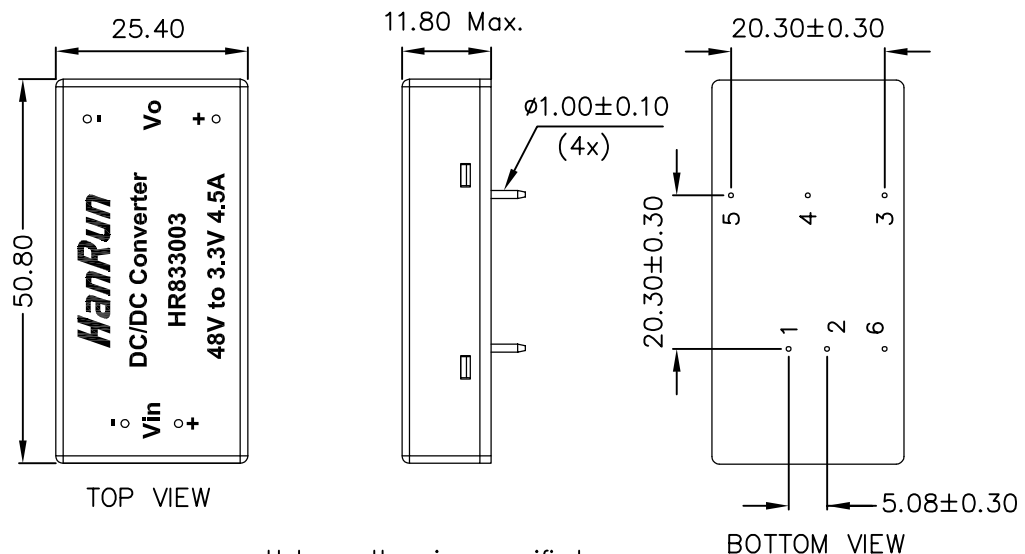
Recommended Test Circuit



Temperature Derating Graph



Mechanical Dimensions



Unless otherwise specified,
Tol.: .xx ± 0.50 (mm)