

15W DC - DC Regulated Single Output Converter

HR833002

Features :

- 50.8x25.4mm compact size
- High efficiency up to 83%
- 1500VDC I/O isolation
- Cooling by free air convection
- Six-sided shield metal case
- 100% burn-in test
- Low cost / High reliability
- Protections: Short circuit / Over Current
- Industry Standard Pinout
- RoHS Compliant (Pb Free)



Electrical Specification @25°C

Output	DC Volatage		5V
	Current Range		300 ~ 3000mA
	Rated Power		15W
	Ripple & Noise (note 2)		150mVp-p Max. @ BW=DC to 20MHz
	Line Regulation (note 3)		±1%
	Load Regulation (note 4)		±1%
	Voltage Accuracy		±2%
	Switching Frequcy		370KHz Typ.
Input	Voltage Range		36 ~ 72VDC
	Efficiency (Typ.)		83%
	DC Current (Typ.)		10mA @ No Load / 500mA @ Full Load
	Filter		Capacitors
	Protection		External Fuse recommended
Protection (note 5)	Over Current	110% ~ 180% Rated output current	
	Short Circuit	All output equipped with short circuit . Protection type:Hiccup mode,recovers automatically after fault condition is removed	
Environment	Working Temprature		-40 ~ +85°C
	Working Humidity		0% ~ 90% RH non-condensing
	Storage Temp., Humidity		-40 ~ +85°C, 10 ~ 95% RH
Safety	Withstand Voltage	Input to output :1500VDC Min. , 5mA Max. , 60 senonds	
	Isolation Resistance	Input to output :1000M Ohms @ 500VDC 25°C 70% RH	
Others	Dimension		50.8*25.4*11.8 mm (L*W*H)
	Weight		about 35g

15W DC - DC Regulated Single Output Converter

HR833002

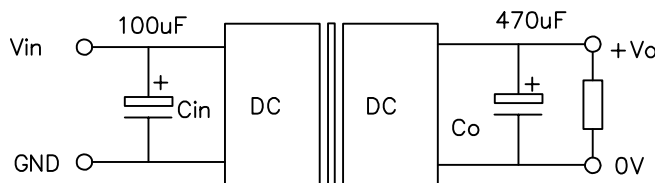
Note :

- 1.All parameters are specified at normal input, rated load, 25°C ambient.
- 2.Ripple & noise are measured by using a probe terminated with a 0.1uf & 47uf capacitor
- 3.Line regulation is measured from low line to high line at rated load.
- 4.Load regulation is measured from 10% to 100% rated load.
- 5.Please prevent the converter from operating in overload or short circuit condition for more than 30 seconds.
- 6.This part is not designed for parallel operation.

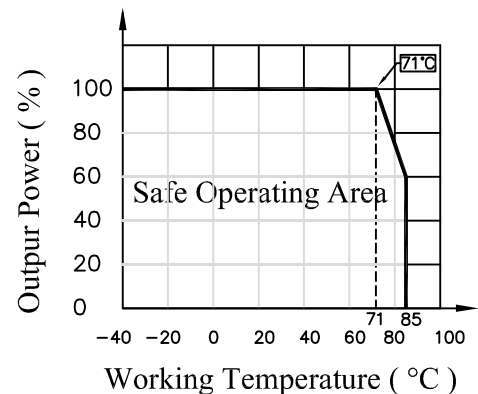
Pin Assignment

Pin	1	2	3	4	5	6
single	+Vin	-Vin	-Vout	NC	+Vout	NC

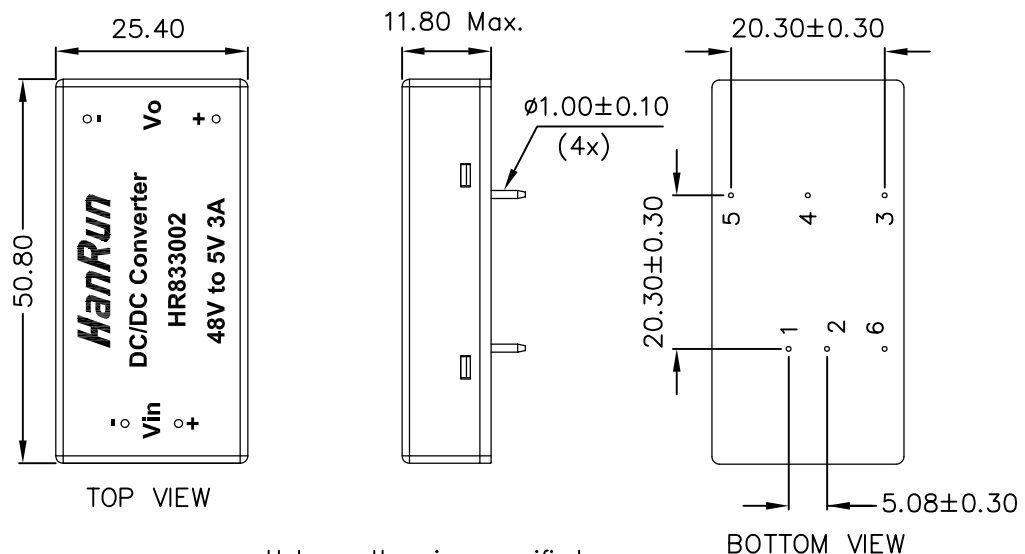
Recommended Test Circuit



Temperature Derating Graph



Mechanical Dimensions



Unless otherwise specified,
Tol.: .xx ± 0.50 (mm)