

HR102588

Electrical Specification @25°C

RoHS Compliant (Pb Free)

Isolation: 1500Vrms 1mA 3S (Pri.&Bias to Sec.) ; 1000Vrms 1mA 3S (Pri. to Bias)

Isolation: 1000Vrms 1mA 3S (Windings to Core)

Pin1,2-3,4 Inductance: 30.0 μ H \pm 10% @100KHz 0.1Vrms (Tie P1+2, P3+4)

Pin1,2-3,4 Leakage Inductance: 1.0 μ H Max. @100KHz 0.1Vrms

(Tie P1+2, P3+4, Shorted other Windings)

Pin1,2-3,4 DC Resistance: 40.0 mohms Maximum (Tie P1+2, P3+4)

Pin5-6 DC Resistance: 220.0 mohms Maximum

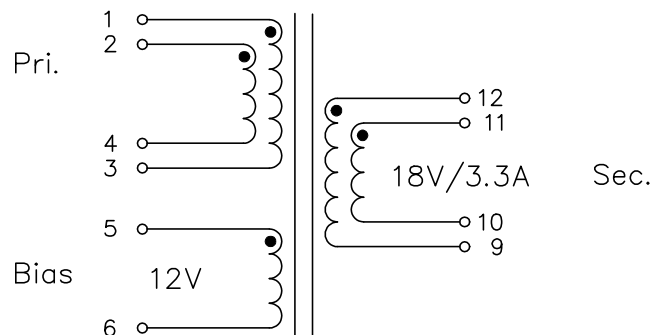
Pin11,12-9,10 DC Resistance: 20.0 mohms Maximum (Tie P9+10, P11+12)

Turns Ratio: (Tie P1+2, 3+4, 9+10, 11+12) @100kHz 0.1Vrms

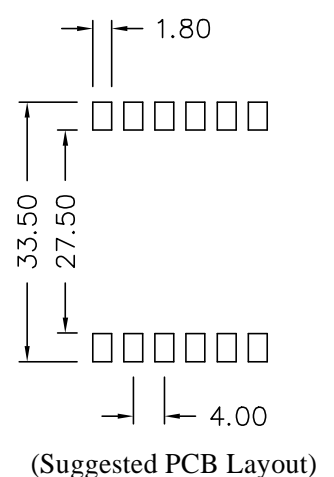
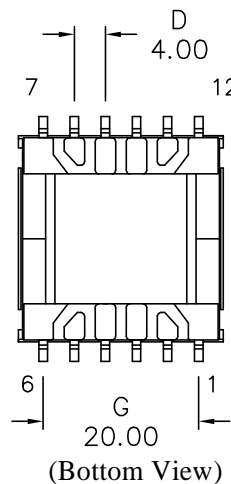
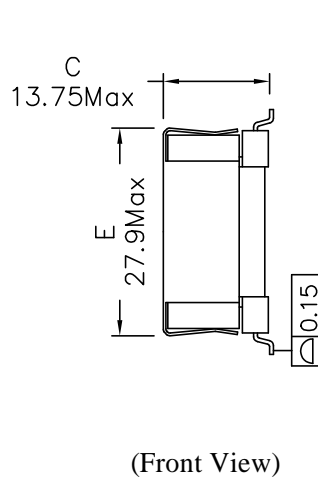
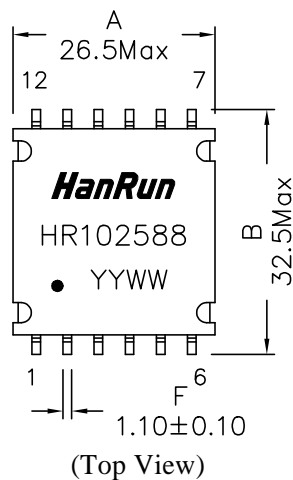
P1,2-3,4 : P5-6 : P11,12-9,10 = 15 : 6 : 10

Input: 36~72V Output: 18V/3.3A

Schematics



Mechanical Dimensions



Unless otherwise specified,
Tol.: .xx \pm 0.25 (mm)