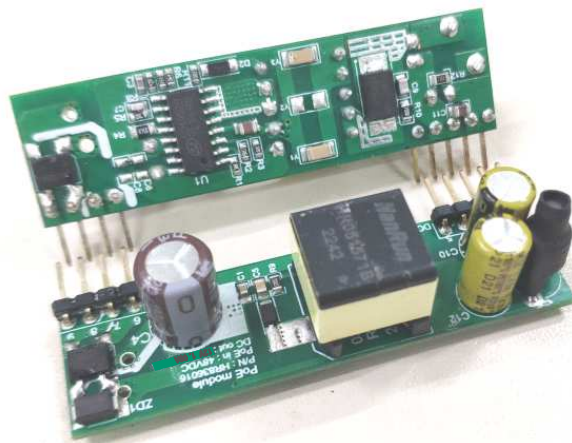


HR836017

Features :

IEEE802.3af compliant
Support 100M/1000M power on Ethernet system
Integral high efficiency DC/DC converter.
Low output ripple and noise
Short-circuit protection
1500Vdc isolation (input to output)
RoHS Compliant (Pb Free)



Applications:

Wireless access point
Security and alarm systems
VOIP telephone
Point of sale network terminal equipment

Electrical Specification

Output	DC Volatage	12V±5% (11.4 ~ 12.6V)
	Current Range	0 ~ 1.08A
	Rated Power	13W Max
	Ripple & Noise (note 2)	100mVp-p Max. @ BW=DC to 20MHz
	Line Regulation	—
	Load Regulation	—
	Voltage Accuracy	—
	Switching Frequcy	170KHz Typ.
Input	PoE Voltage Range	40 ~ 57VDC
	Efficiency	85% .Min @ full load
	DC Current	310mA typ. @ 48Vin Full Load
Protection	Outout short Circuit	Recovers automatically after fault condition is removed
	Input overvoltage	58V tranaient voltage suppressor
Environment	Working Temp., Humidity	−25 ~ +60°C , 20% ~ 80% RH non-condensing, altitude of 1000 feet Max.
	Storage Temp., Humidity	−40 ~ +85°C, 10 ~ 90% RH , altitude of 3000 feet Max.
Safety	Withstand Voltage	Input to output :1500VDC Min. , 1mA Max. , 60 senonds
	Isolation Resistance	Input to output :1000M Ohms @ 500VDC 25°C 70% RH
Others	Dimensions	60*16*17.5 mm (L*W*H)
	Weight	about 14g

Note :

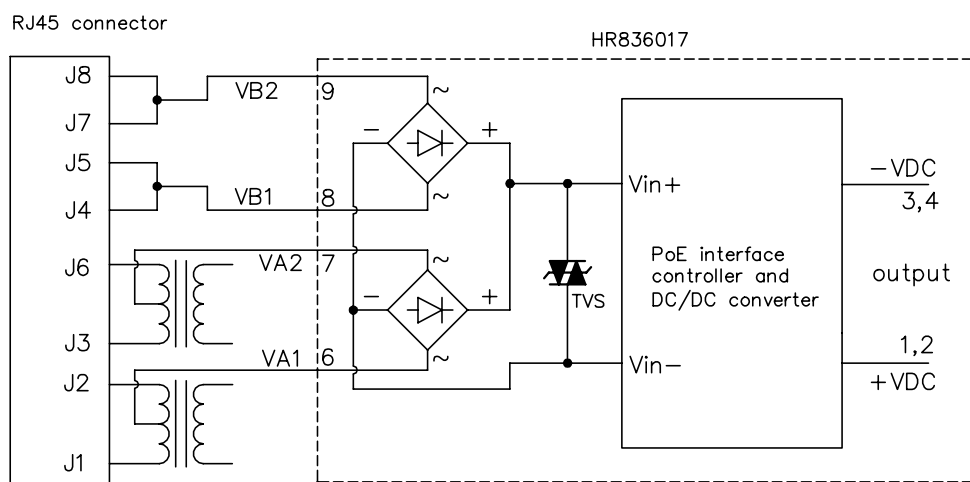
- 1.All parameters are specified at normal input, rated load, 25°C ambient.
- 2.Ripple & noise are measured by using a probe terminated with a 0.1uf & 47uf capacitors .
- 3.Please prevent the converter from operating in overload or short circuit condition for more than 60 seconds.
- 4.This part is not designed for parallel operation.
- 5.The module are designed to extract power from a conventional twisted pair Category 5 Ethernet cable, conforming to the IEEE 802.3af .

HR836017

Pin Description

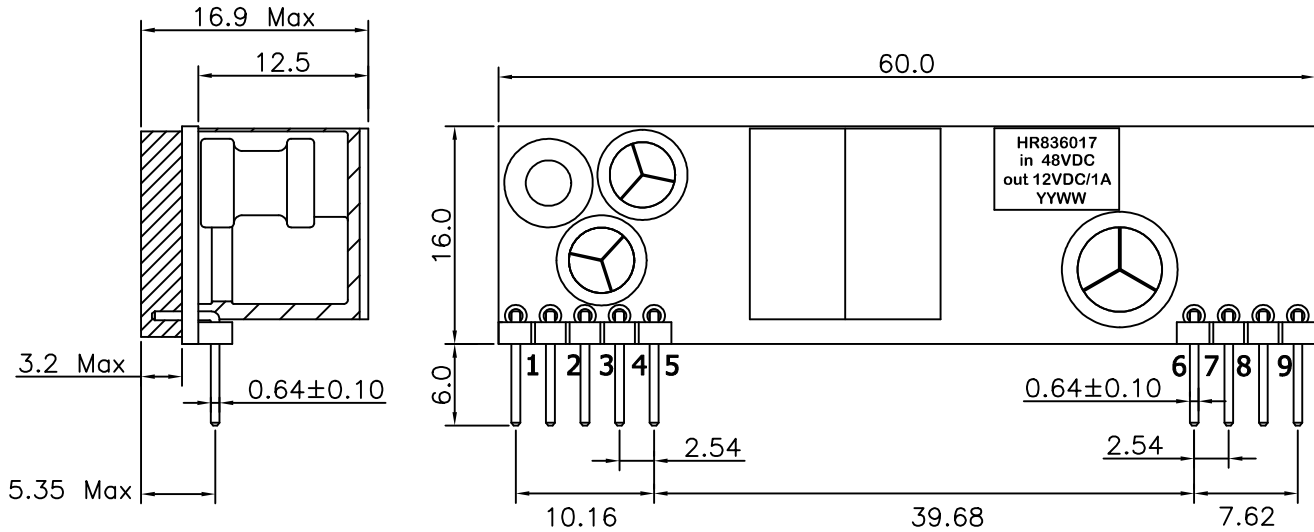
Pin No.	Symbol	description
1,2	+VDC	DC Output. This pin provides the regulated output from the DC/DC converter.
3,4	-VDC	Ground. The ground return for the +VDC output.
5	NC	Not Connect to any pins, for assembly only
6	VA1	This input pin is used in conjunction with VA2 and connects to the centre tap of the transformer connected to pins 1 & 2 of the RJ45 connector . VA1 and VA2 are not polarity sensitive.
7	VA2	This input pin is used in conjunction with VA1 and connects to the centre tap of the transformer connected to pins 3 & 6 of the RJ45 connector . VA1 and VA2 are not polarity sensitive.
8	VB1	This input pin is used in conjunction with VB2 and connects to pin 4 & 5 of the RJ45 connector .VB1 and VB2 are not polarity sensitive.
9	VB2	This input pin is used in conjunction with VB1 and connects to pin 7 & 8 of the RJ45 connector .VB1 and VB2 are not polarity sensitive.

Typical Connection Diagram



HR836017

Mechanical Dimensions



Unless otherwise specified,
Tol.: .x ± 0.5; .xx ± 0.25 (mm)