

HR310104-XXX

Electrical Specification @25°C

Part Number	Inductance (uH ±20%)	Isat(1) (A)	Irms(2) (A)	DCR (ohms Max)	Test Frequency
HR310104-1R0	1.00	20.0	8.60	0.009	100KHz/0.1V
HR310104-2R2	2.20	16.0	7.10	0.014	100KHz/0.1V
HR310104-3R3	3.30	14.0	6.20	0.018	100KHz/0.1V
HR310104-5R6	5.60	12.0	5.30	0.020	100KHz/0.1V
HR310104-100	10.0	10.0	4.30	0.031	100KHz/0.1V
HR310104-150	15.0	8.00	4.00	0.036	100KHz/0.1V
HR310104-220	22.0	7.00	3.50	0.047	100KHz/0.1V
HR310104-330	33.0	5.50	3.00	0.066	100KHz/0.1V
HR310104-470	47.0	4.50	2.60	0.086	100KHz/0.1V
HR310104-680	68.0	3.50	2.30	0.130	100KHz/0.1V
HR310104-101	100.0	3.00	1.80	0.190	100KHz/0.1V
HR310104-151	150.0	2.60	1.50	0.250	100KHz/0.1V
HR310104-221	220.0	2.40	1.20	0.380	100KHz/0.1V
HR310104-331	330.0	1.90	1.00	0.560	100KHz/0.1V
HR310104-471	470.0	1.40	0.82	0.850	100KHz/0.1V
HR310104-681	680.0	1.20	0.72	1.100	100KHz/0.1V
HR310104-102	1000.0	1.00	0.56	1.800	100KHz/0.1V

Notes:

- (1) Inductance drop 10% typical at Isat
- (2) For 40°C temperature rise typical at Irms

HR310104-XXX

## Features:

High power, High saturation, Low resistance.

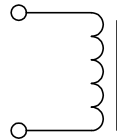
Ideal inductors for DC-DC conversion in notebook computer,

PDAs, Step-up or step-down converters flash memory programmers, etc.

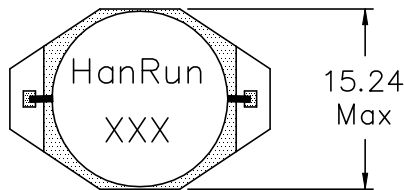
Inductance and Rated current ranges: 1.0uH ~ 1000uH & 20A ~ 1A.

Available on tape and reel for auto surface mounting.

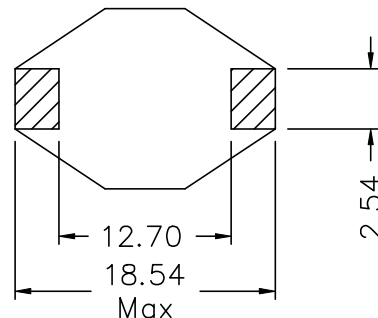
## Schematics



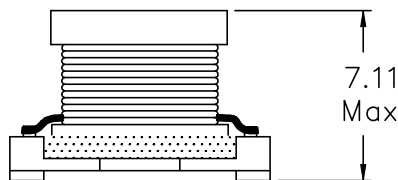
## Mechanical Dimensions



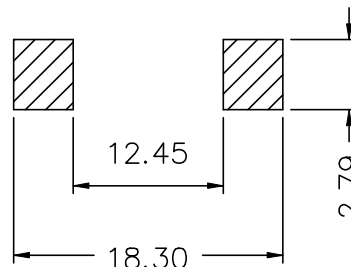
(TOP VIEW)



(BOTTOM VIEW)



(FRONT VIEW)



(SUGGESTED MOUNTING PAD)

Unless otherwise specified,  
Tol.: .xx ±0.25 (mm)