

HR310108-XXX

Electrical Specification @25°C

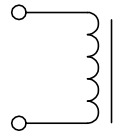
Part Number	Inductance ($\mu\text{H} \pm 20\%$)	Isat(1) (A)	DCR (ohms Max)	Test Frequency
HR310108-R18	0.18	8.0	0.010	100KHz
HR310108-R47	0.47	5.0	0.020	100KHz
HR310108-1R0	1.00	3.0	0.050	100KHz
HR310108-1R1	1.10	2.9	0.050	100KHz
HR310108-1R5	1.50	2.6	0.050	100KHz
HR310108-2R2	2.20	2.10	0.080	100KHz
HR310108-3R3	3.30	2.00	0.130	100KHz
HR310108-4R7	4.70	1.50	0.150	100KHz
HR310108-6R8	6.80	1.20	0.180	100KHz
HR310108-100	10.0	1.10	0.200	100KHz
HR310108-150	15.0	1.10	0.300	100KHz
HR310108-220	22.0	0.80	0.400	100KHz
HR310108-330	33.0	0.60	0.510	100KHz
HR310108-470	47.0	0.50	0.850	100KHz
HR310108-680	68.0	0.40	0.920	100KHz
HR310108-101	100.0	0.31	1.800	100KHz

Notes:

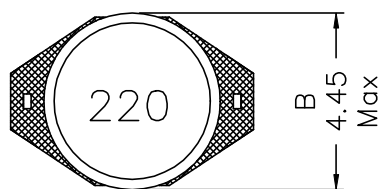
- (1) Inductance drop 10% typical at Isat
- (2) For 40°C temperature rise typical at Irms

HR310108-XXX

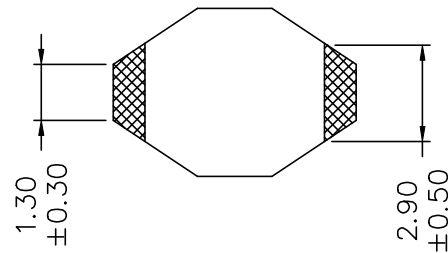
Schematics



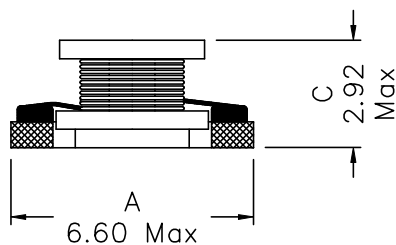
Mechanical Dimensions



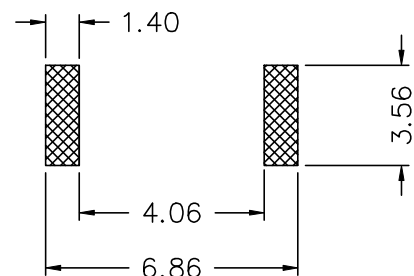
(TOP VIEW)



(BOTTOM VIEW)



(FRONT VIEW)



(SUGGESTED MOUNTING PAD)

Unless otherwise specified,
Tol.: .xx ±0.25 (mm)